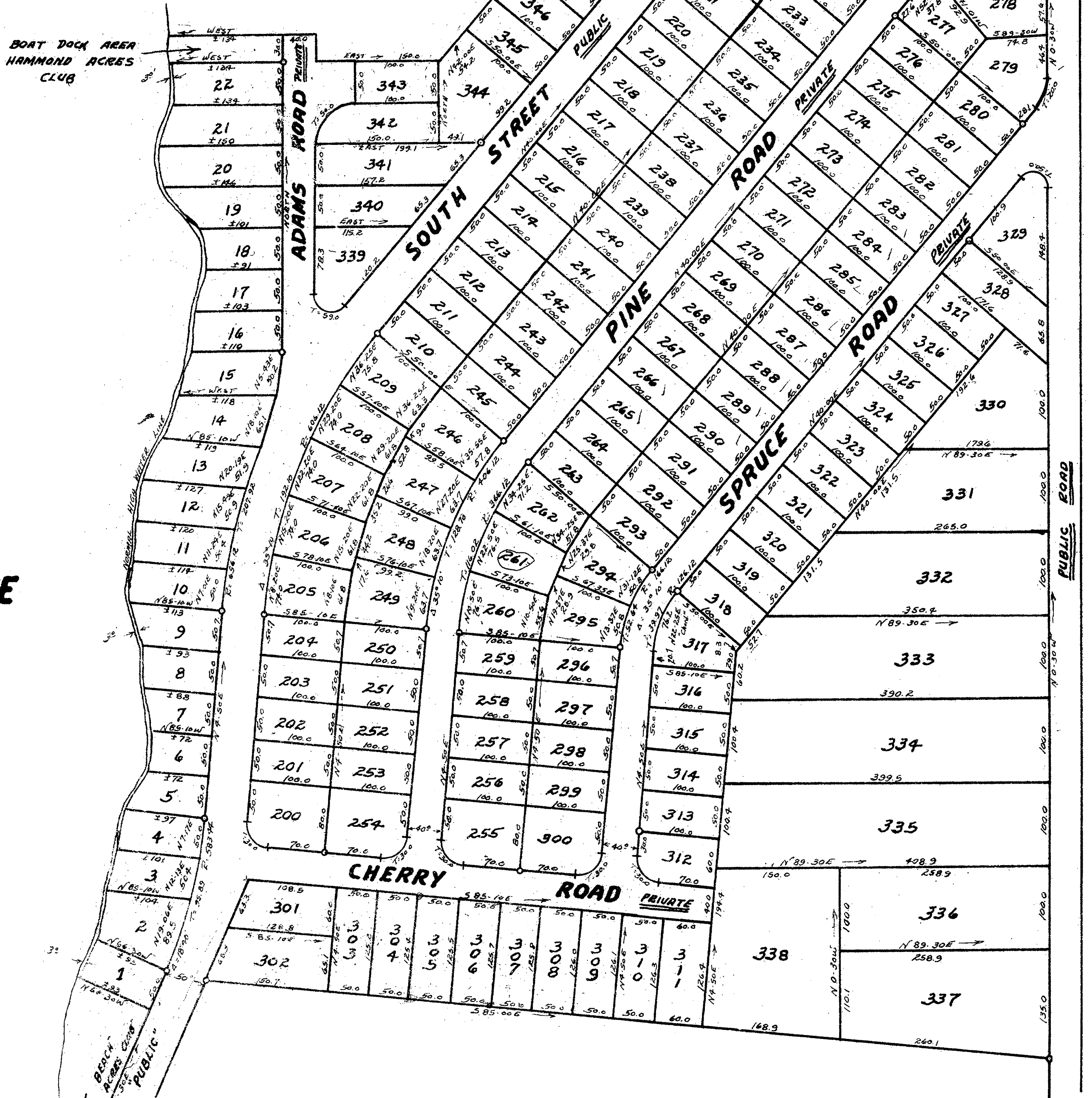
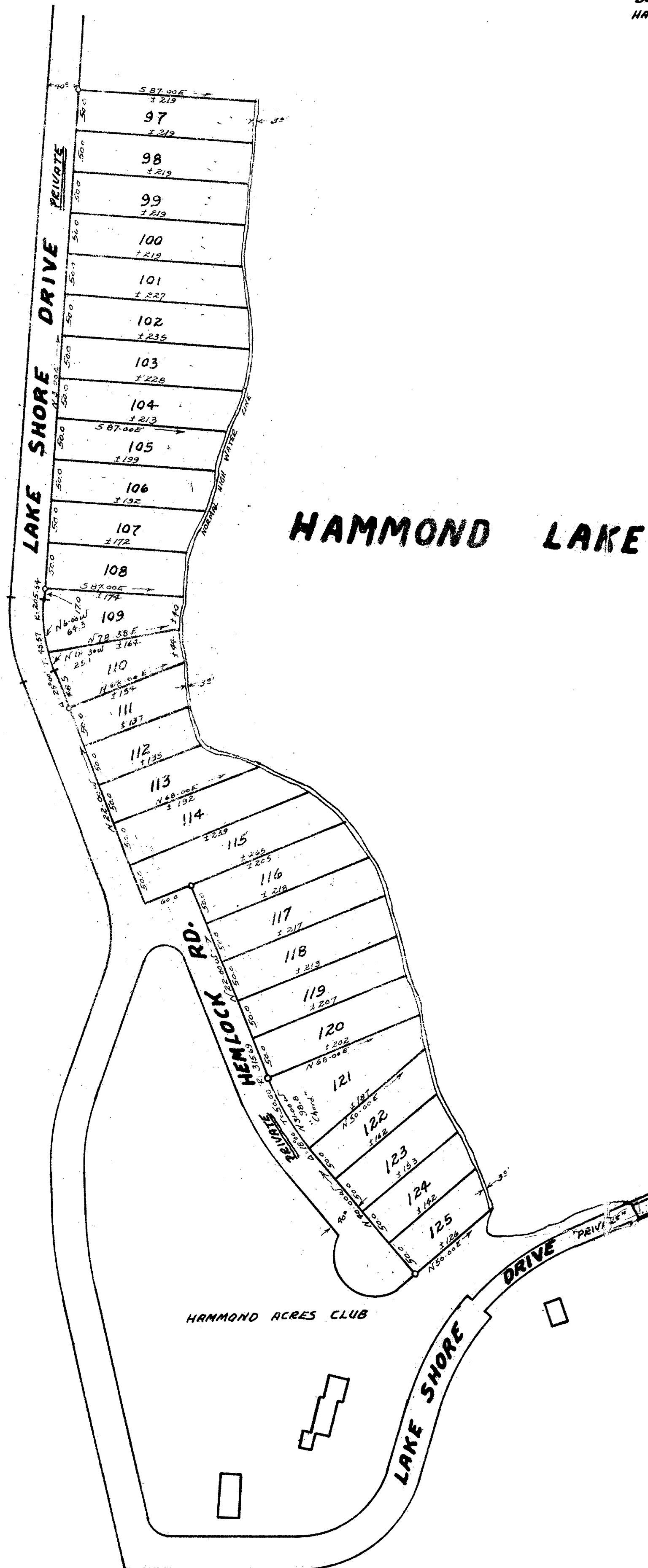


SEE BOOK 1630 PAGE 39

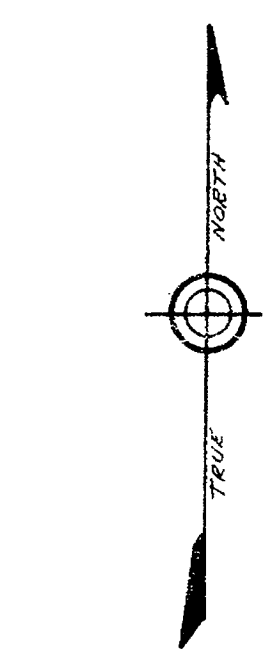


See Book 1560 Page 704

SEE BOOK 1650 PAGE 39

SEE BOOK 5597 PAGE 123

MAP NO. 1
HAMMOND ACRES
HAMPSHIRE COUNTY
GOSHEN, MASS.



MAGNETIC DECLINATION APPROX. 12° WEST

NOTE: O = PERMANENT CORNERS THAT ARE MARKED WITH IRON PINS

SCALE: 0 100 400 FEET

4052

Carl Parker
Surveyor
July 13, 1956

Hamshire, ss. July 13 1956
2 o'clock 457 minutes P. M.
Received and Recorded.
Raymond A. Warner Registrar